



ModelRisk installation guide

Installation, Activation, De-activation, Upgrade

Vose Software

04/10/2011

Contents

1.	Installation	2
2.	Activation of the Professional and Industrial licenses.....	9
3.	License de-activation	11
4.	License transfer.....	14
5.	Updating ModelRisk	15

If you have any difficulty following these procedures please contact us at:

support@vosesoftware.com

ModelRisk installation guide

1. Installation

Follow the steps below to install ModelRisk:

1. Go to Vose Software website www.vosesoftware.com
2. Choose “Download ModelRisk” from Quick Links.



3. The following registration screen will appear. Fill in the details into each field as they are all obligatory. If a colleague or a friend has sent you an email introducing you to ModelRisk, please enter the ID number that appears in their email into the Referral field to ensure that they receive a credit for introducing you to ModelRisk. Click “Register”.

Download your copy of ModelRisk 4!

ModelRisk is a risk analysis add-in for Microsoft Excel running on Windows. Please note the system requirements shown on the right.

Fill out the form below to download ModelRisk 4. After submitting the form, you will receive an e-mail containing your User ID number that is required for the software activation.

Personal details

First Name:	<input type="text" value="John"/>
Last Name:	<input type="text" value="Connor"/>
Email:	<input type="text" value="John.Connor@skynet.com"/>
Choose your password:	<input type="password" value="*****"/>
Retype Password:	<input type="password" value="*****"/>
Organization:	<input type="text" value="SkyNet"/>
Position:	<input type="text" value="RiskAnalyst"/>
Currency:	<input type="text" value="USD"/>
Phone Number:	<input type="text" value="+1 231-256-157-38"/>
<small>Please use the following format(s): XXX-XXX-XXXX, XX-XXX-XXX-XX, etc.</small>	
Country:	<input type="text" value="United States of America"/>
Referral:	<input type="text" value="User ID of your Friend"/>
ModelRisk version:	<input type="text" value="Standard, FREE"/>
<input type="button" value="Register"/>	

4. Then the following screen will appear. Download the ModelRisk for Excel (32 bit) or (64 bit) compatible with Excel version on your computer.

Download your free copy of ModelRisk 4 Standard!

Thank you for completing the registration form.

You were sent an e-mail containing your User ID, which you will need for ModelRisk activation.

If you don't receive an email, your server may have assigned the email to spam, in which case please contact downloads@yosesoftware.com

To download your FREE ModelRisk Standard, click the following button:



For a pdf file of the installation instructions click here:



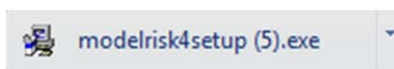
Note: At any time you can activate the ModelRisk Industrial edition for 15 days. After the trial period the software will automatically switch back to the Standard edition.

Please visit [this page](#) if you would like to purchase a Professional or Industrial edition of ModelRisk.

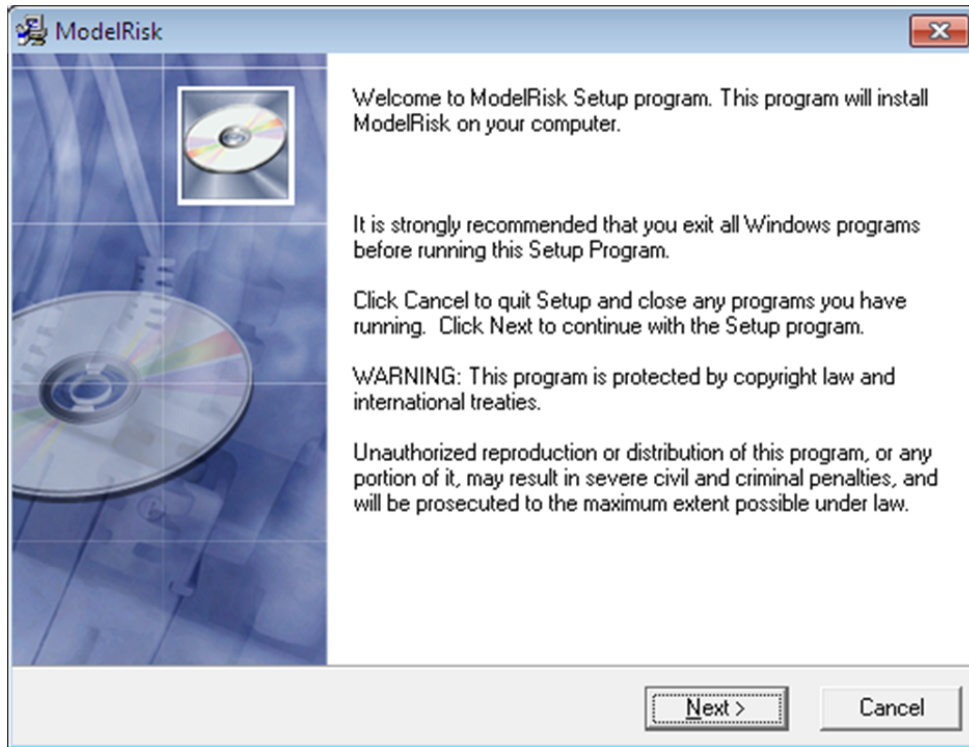
Click [here](#) for a review of ModelRisk's features:

Click [here](#) for a guide to help you select the version of ModelRisk that will best suit your needs:

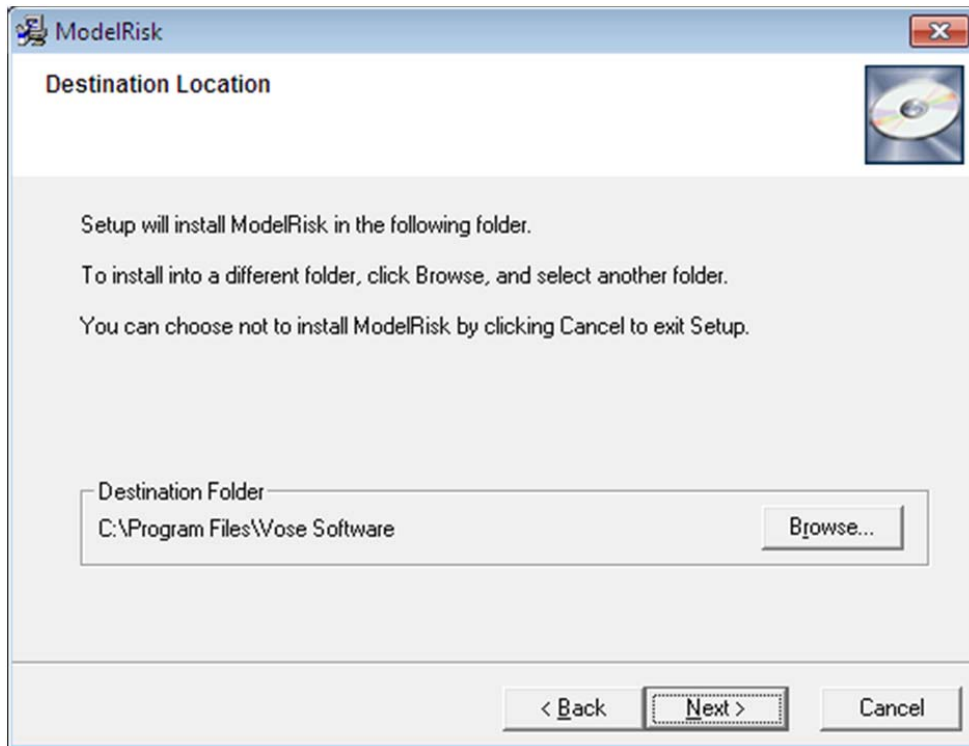
5. When ModelRisk is downloaded. Start installation by double click the file icon:



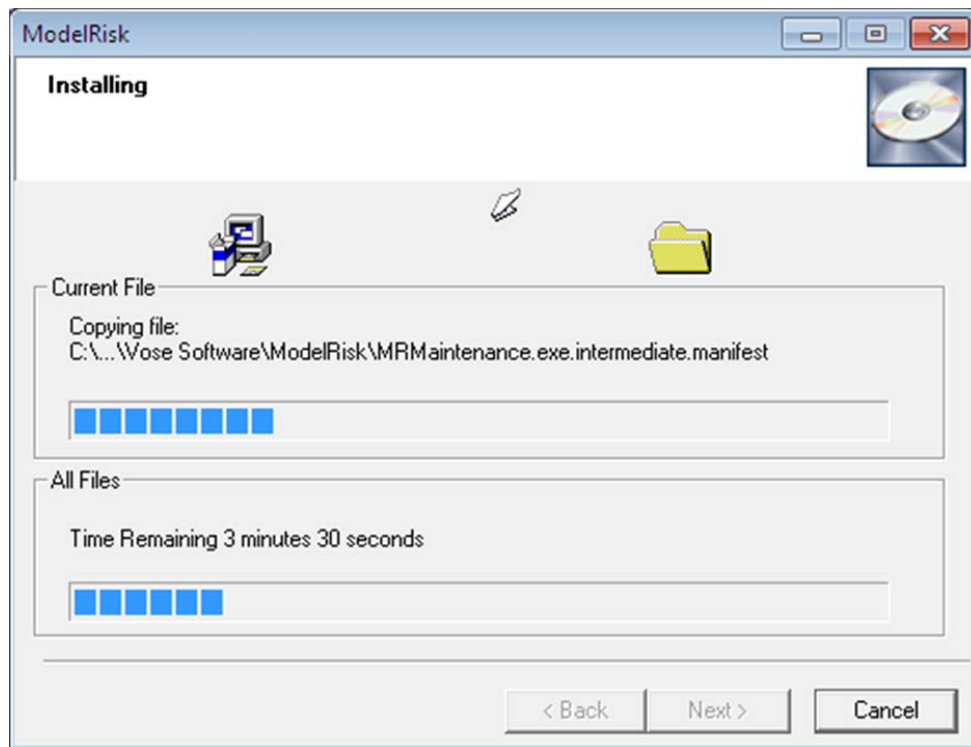
6. The setup procedure will begin. Click the Next button:



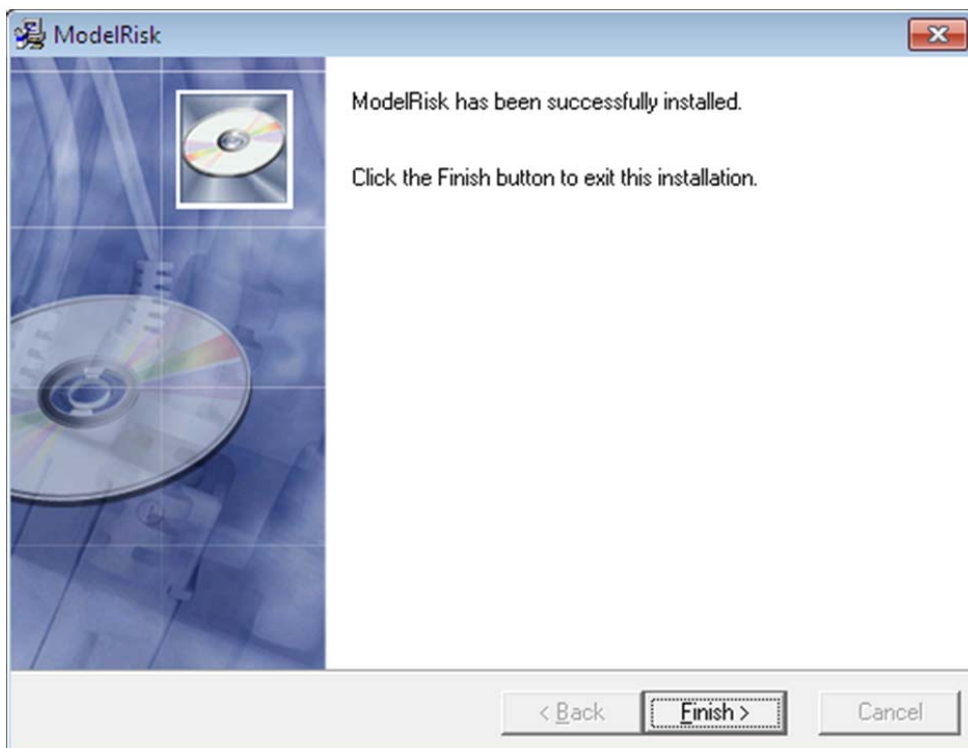
7. Select the installation folder. By default the installation procedure will create the folder C:\Program Files\Vose Software. Click Next:



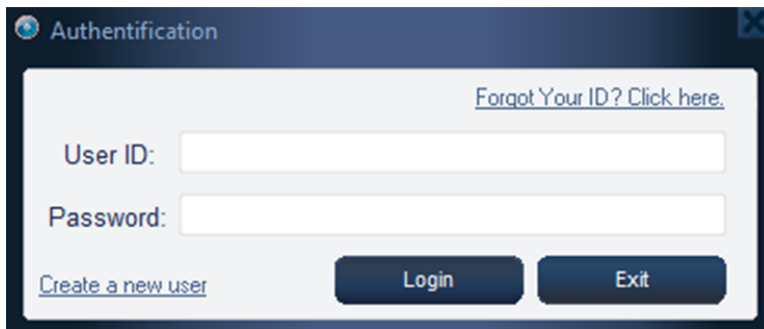
8. ModelRisk will start copying the files into the installation folder:



9. Click Finish to exit the installation:



10. Make sure that **Microsoft Excel is not currently running on your computer and, if possible, that you are connected to the Internet.**
11. Start ModelRisk from the Windows Start Menu. The following Authentication screen will appear. To pass Authentication successfully you will have to type in User ID and Password that you had received by e-mail after registration.



12. The following screen will appear. My Details tab shows the details you entered on registration. You can add information about your areas of interest and professional status to ensure that only information of most relevance to you (articles, news items, details on training) will appear in the Vose Software User Account:

Vose Software User Account

My Account My Details Upgrades Training Consulting News My favorites Contact us

Name: John Connor
 Organization: SkyNet
 Position: Risk Analyst
 Region: United States
 E-mail: John.Connor@skynet.com
 Currency (for approximate price conversion): USD

Special categories

I am a consultant
 I am a university professor
 I am a university student
 I am in government
 I am a software developer

Areas of interest (select as many as you wish)

Banking Pharmaceutical Six sigma
 Insurance Construction Manufacturing
 Finance Project management Business
 Engineering Oil and gas Utilities
 Epidemiology Energy Other
 Health Law

Update information

Note: Providing accurate information will ensure correct registration of your software license and access to our bonus point scheme. It also allows us to alert you of tools, techniques, courses and consulting services that could be of most interest to you.

The information you provide will be uploaded to Vose Software's database. Vose Software will not share this information with any third party without your prior written consent. [Click here](#) to see our policy on handling your personal data.

13. Close the Vose Software User Account window to start using ModelRisk.

14. You can read more about the function and use of the Vose Software User Account in the ModelRisk Help File.

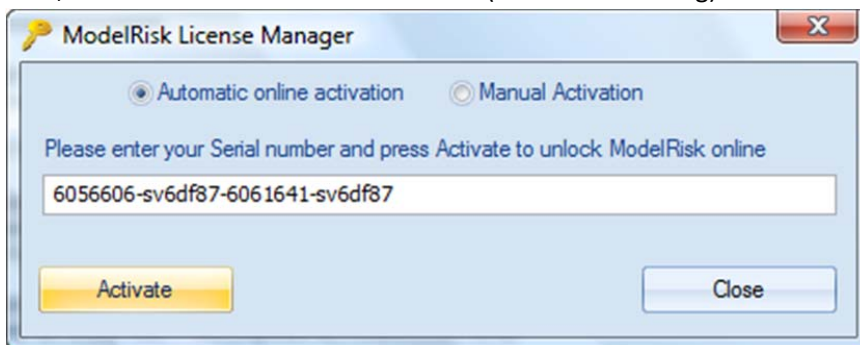
2. Activation of the Professional and Industrial licenses

When you purchase a license of ModelRisk Professional or Industrial you will receive a serial number from Vose Software by email. The following steps describe how to activate your license with this serial number:

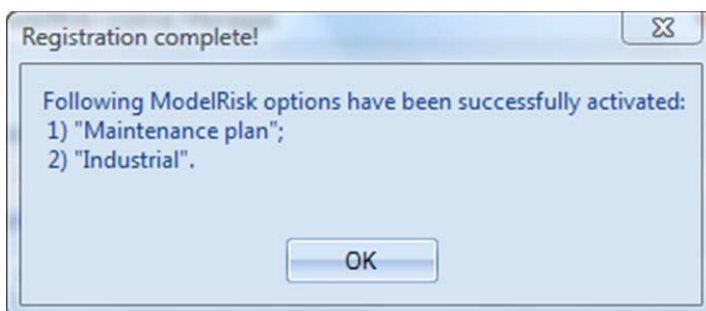
1. Load Excel and the free Standard edition of ModelRisk. Click "Upgrade ModelRisk" on the ModelRisk Ribbon:



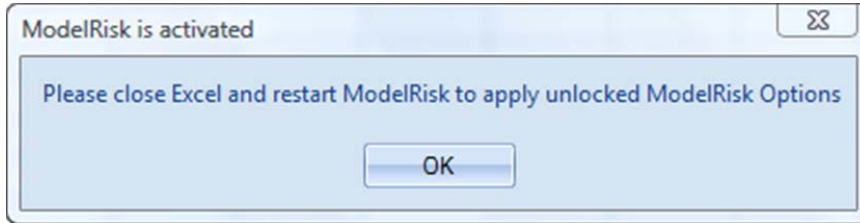
2. Connect to the Internet if possible and then enter the ModelRisk serial number into the input field, select 'Automatic online activation' (the default setting) and click Activate:



3. If you cannot get online, you will need to contact Vose Software and we will guide you through the Manual Activation option.
4. Successful activation is followed by a confirmation message showing the licenses activated. Click OK to continue:



5. An instruction to re-start Excel will appear. Click OK to continue:

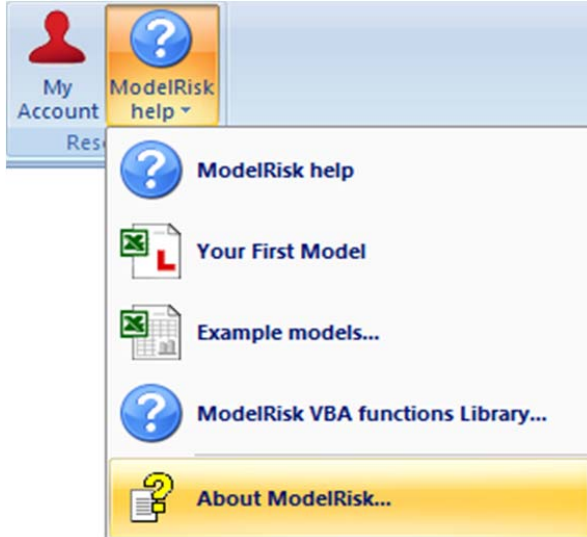


6. Re-start Excel to finish the license activation.

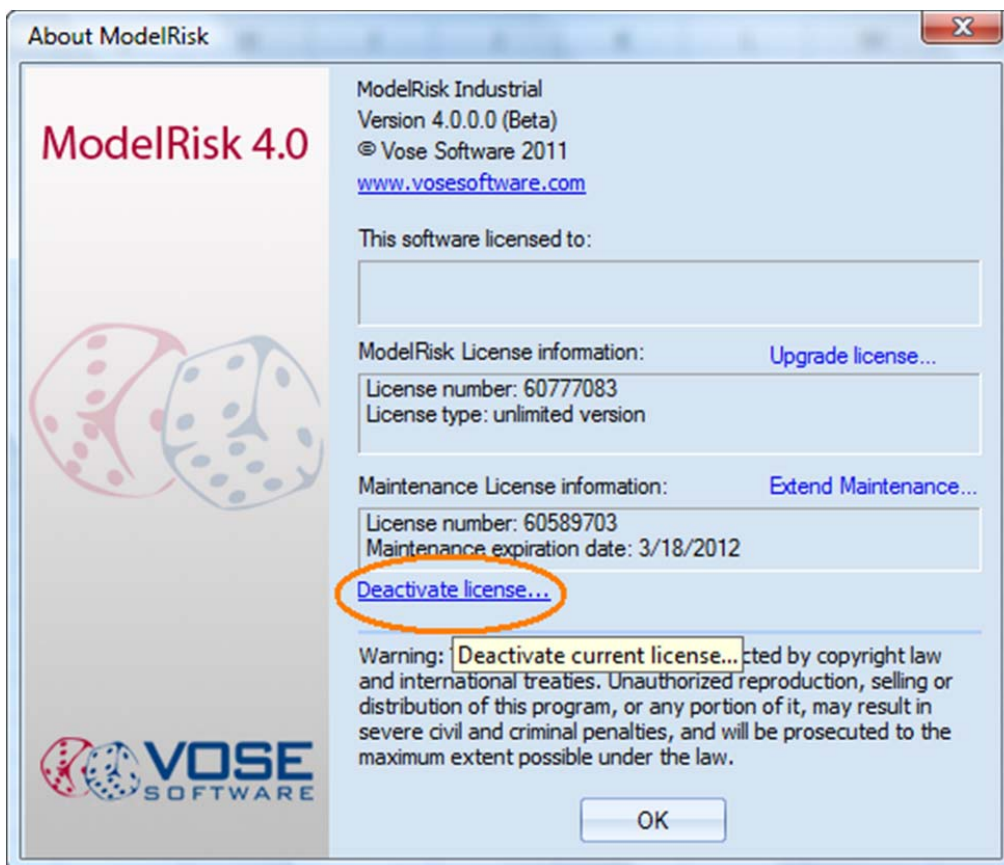
3. License de-activation

Follow the steps below to de-activate a ModelRisk license:

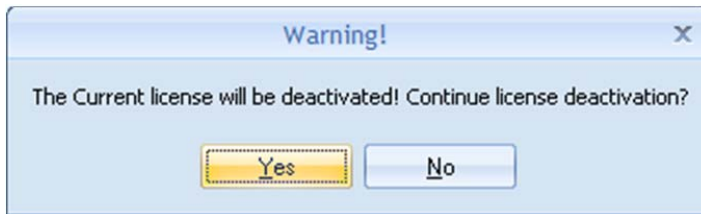
1. Go to ModelRisk Ribbon -> Help -> About ModelRisk:



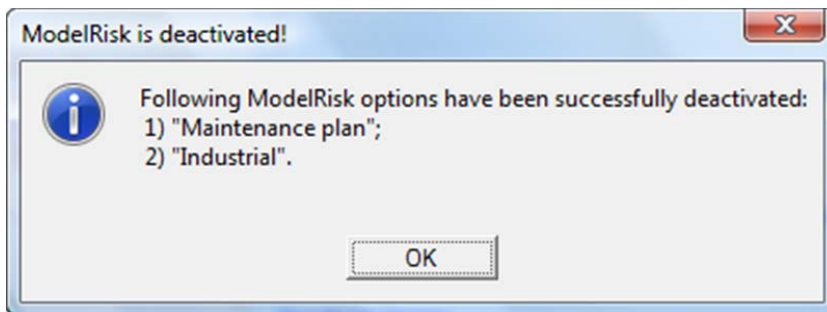
2. Click "Deactivate license...":



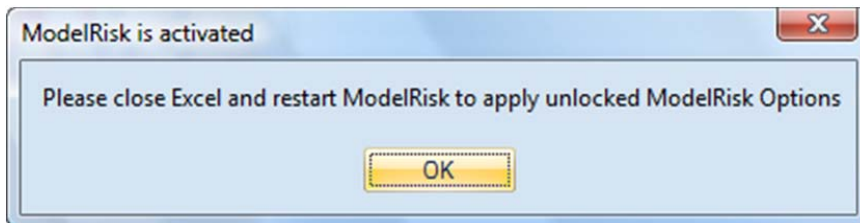
3. Confirm de-activation:



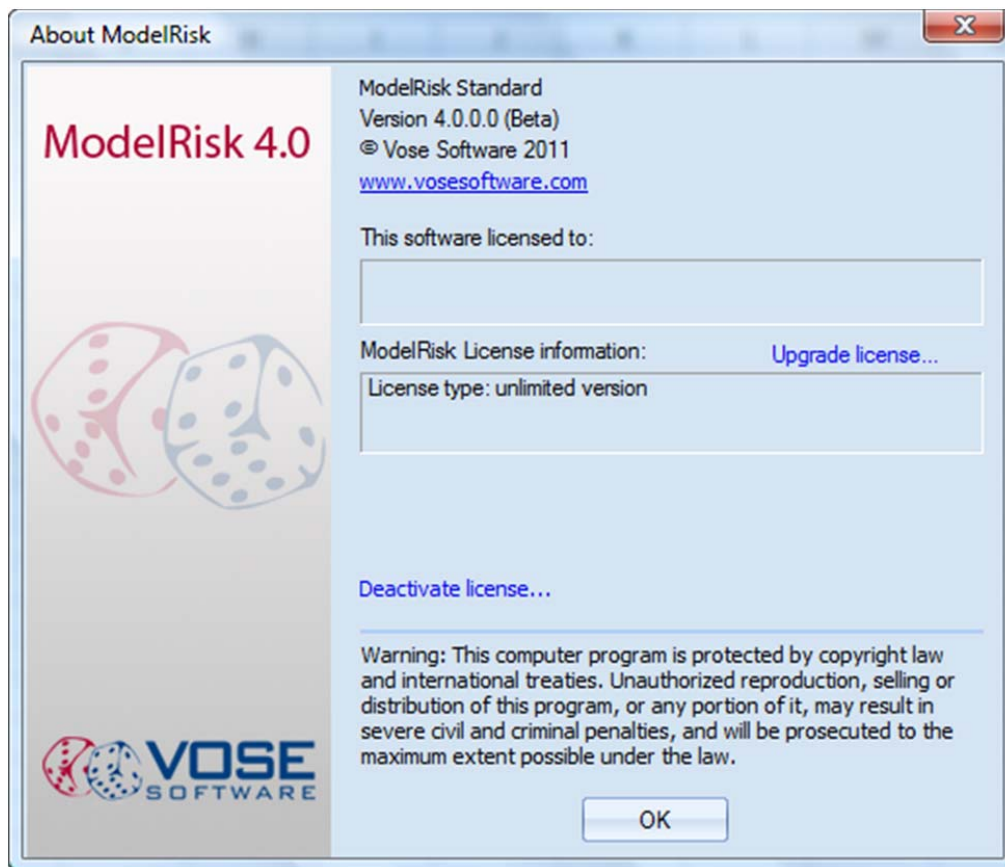
4. A list of de-activated ModelRisk options will appear. Click OK to continue:



5. Instructions to re-start Excel will appear. Click OK to continue:



6. ModelRisk will revert to the Standard (Free) version:



7. Re-start Excel to complete license de-activation.

4. License transfer

You may wish to change your computer and transfer your ModelRisk license from your old computer to your new one.

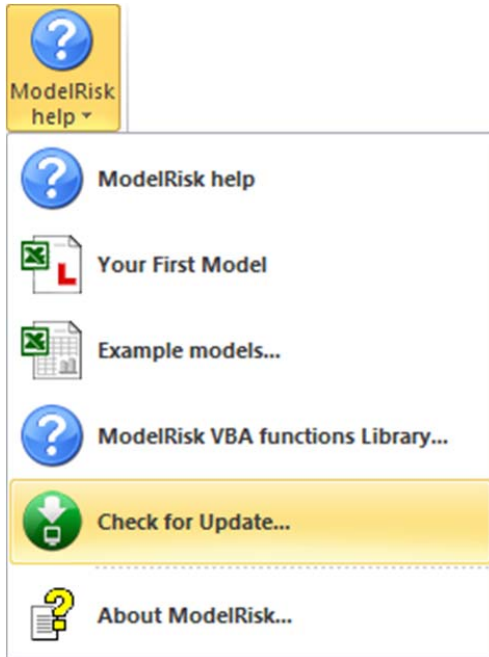
License transfer needs to be performed in two parts. First of all, you will need to deactivate the license from your old computer by following the steps described in Section 3 (License de-activation) above. ModelRisk will not install on your new PC with the same license key unless you have performed this step.

Then you will need to install ModelRisk on your new PC by following the steps in Section 2 (Activation of Professional and Industrial licenses).

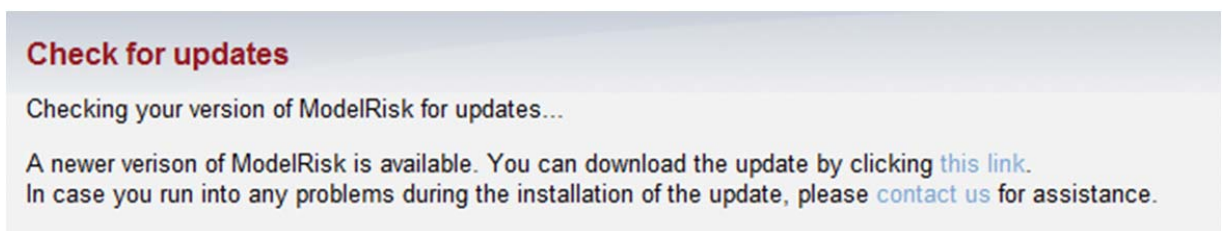
5. Updating ModelRisk

Update ModelRisk by following the steps below:

1. Check for the new version by choosing “ModelRisk Help” -> “Check for Update”:



2. A Vose Software website page will open, which will show the following message if the update is available:



3. Click the download link and save the installation file on your computer
4. Run the installation file and follow the steps to complete the installation.

For any questions about these instructions, please contact:

Vose Software BVBA

www.vosesoftware.com | support@vosesoftware.com