



vose

Putting numbers around risk

Tamara installation guide

Installation, Activation, De-activation, Upgrade

Vose Software

01-May-2019

Contents

1. Installation	2
2. Activation of the Tamara license	5
3. License de-activation	10
4. License transfer.....	11
5. Updating Tamara	11

If you have any difficulty following these procedures please contact us at:

support@vosesoftware.com

Tamara installation guide

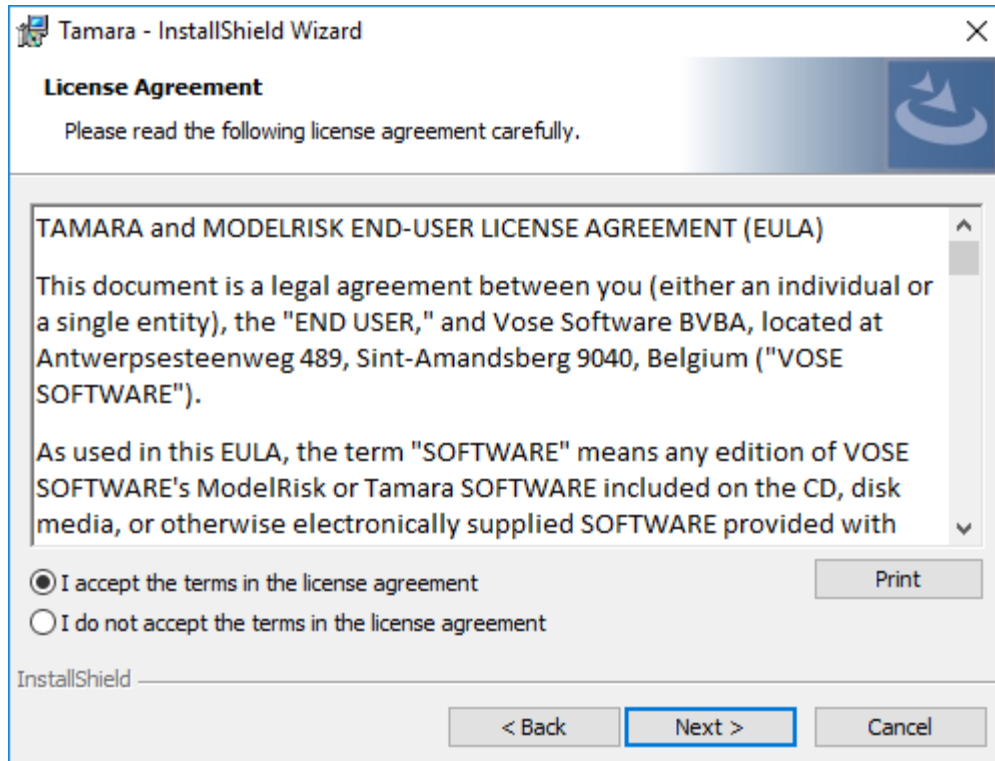
1. Installation

Follow the steps below to install Tamara:

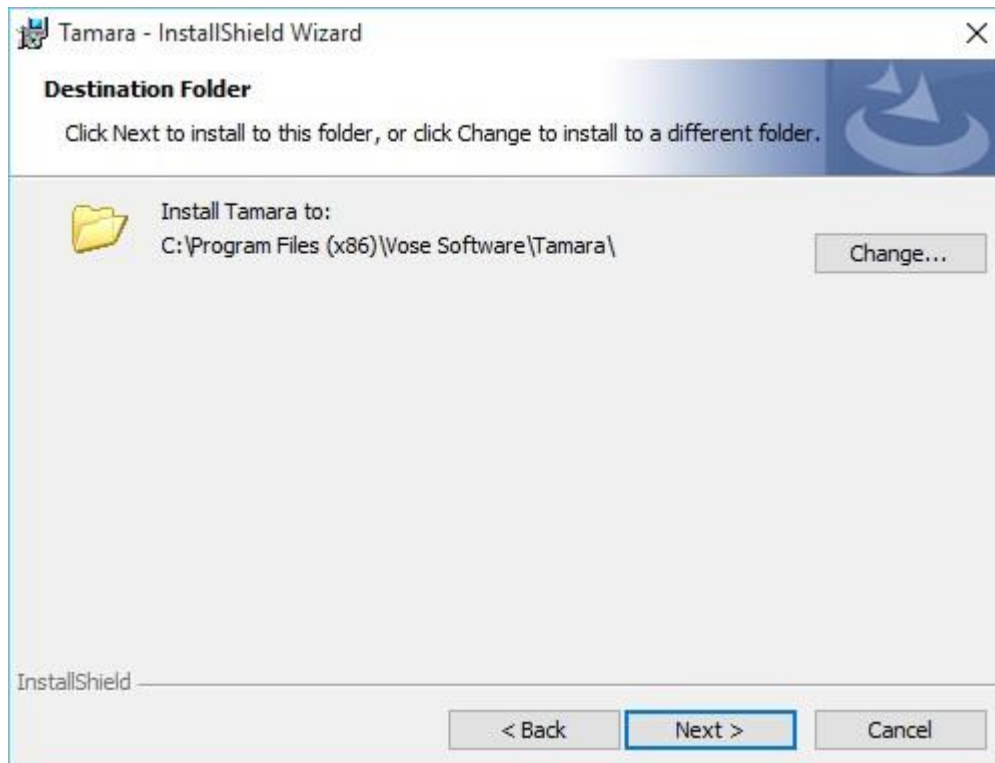
1. Go to the Vose Software website www.vosesoftware.com and download the Tamara setup file.
2. Save the TamaraSetup.exe file on your hard drive and double-click it to start the installation procedure.
3. The setup procedure will begin. Click the Next button on the screen:



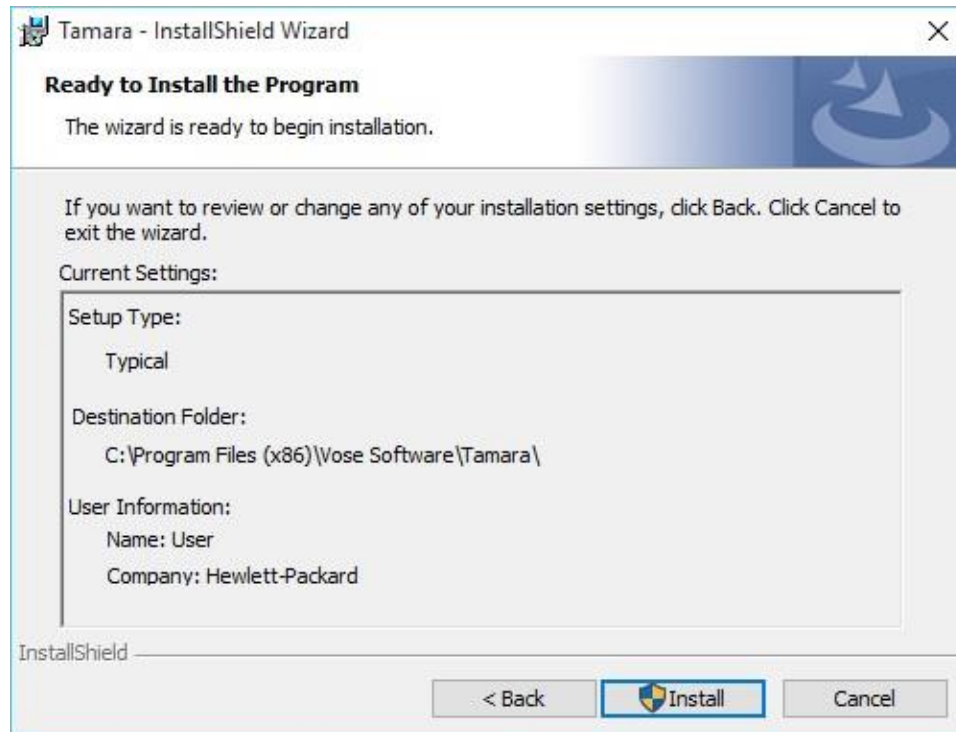
4. Read the license agreement and select "I accept the terms of the license agreement". Click Next:



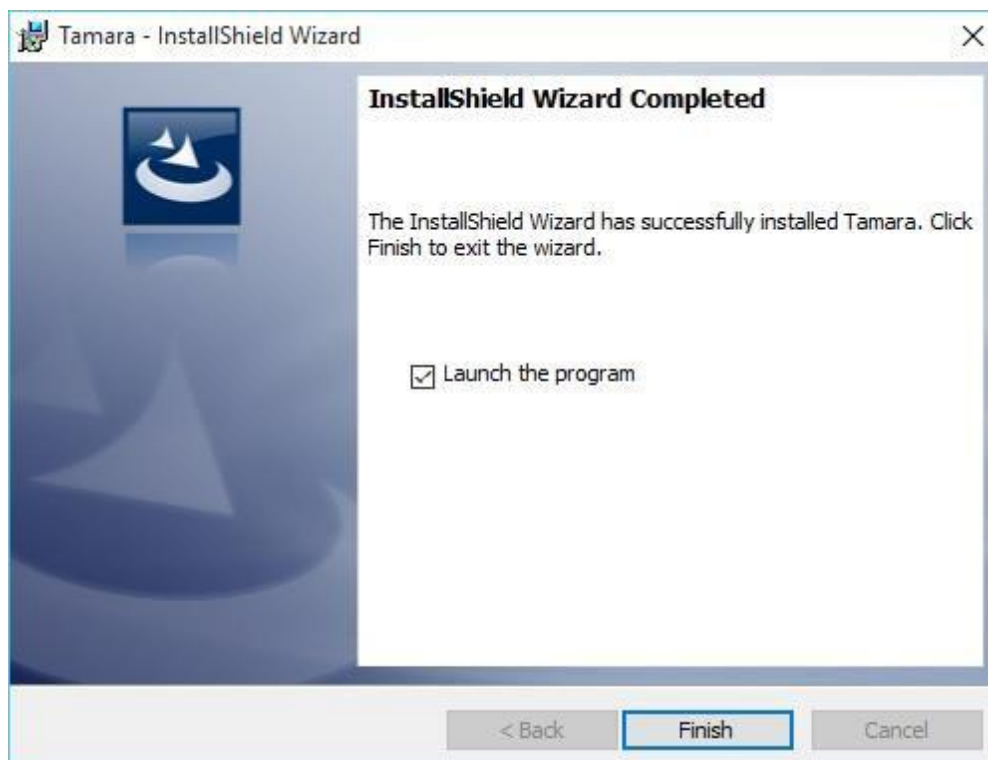
5. Select the installation folder. By default the installation procedure will create the folder C:\Program Files (x86)\Vose Software\Tamara\. Click Next:



6. Click Next to confirm installation:



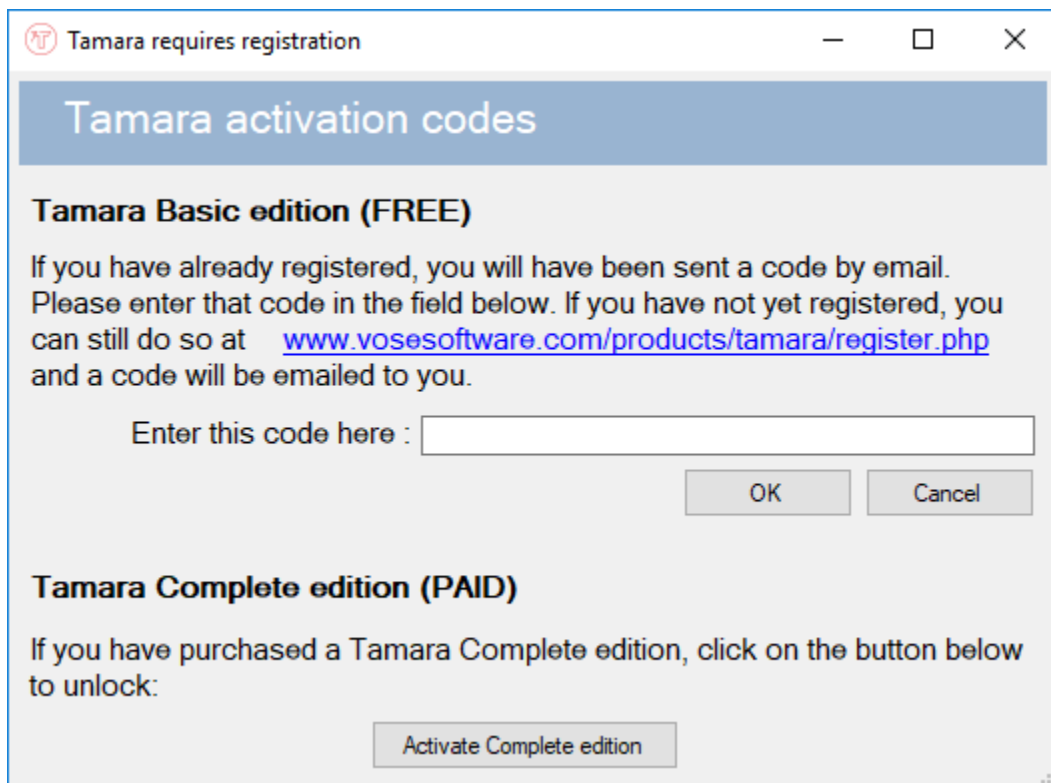
7. Tamara will start copying the files into the installation folder.
8. Click Finish to exit the installation:



9. Tamara will automatically start to run. If you unselected the checkbox during the last step, you can start Tamara from the Windows Start Menu (All Programs => Vose Software => Tamara => Tamara).
10. You can check that Tamara is installed by launching Tamara (see step above).

2. Activation of the Tamara license

When Tamara is launched, it shows the following screen allowing the user to activate the Basic or Advanced edition:

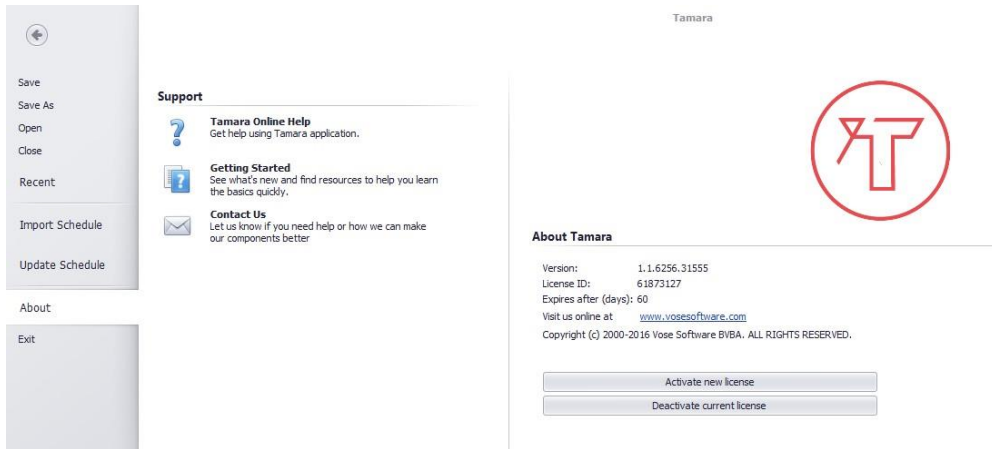


Activating the Basic edition requires the user to copy-paste the code that you received by e-mail after requesting the Basic license into the input field and click the OK button. This will unlock the Tamara Basic edition for a period of 1 year.

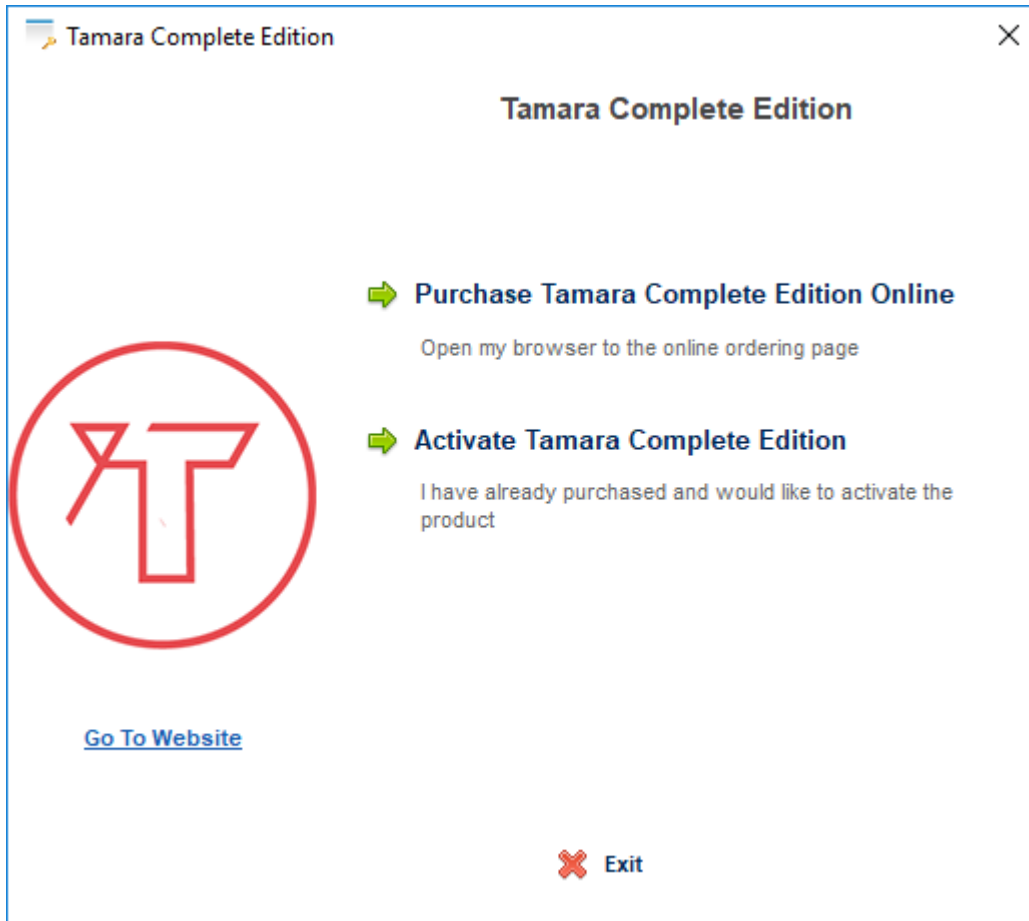
If you have purchased a license of Tamara Complete, you should have received a License ID and a Password from Vose Software by email. The following steps describe how to activate your license of Tamara Complete:

1. Click the "Activate Complete edition" button above.

- Alternatively, if you are upgrading from a Tamara Basic edition, navigate to File -> About Menu and click Activate new license:



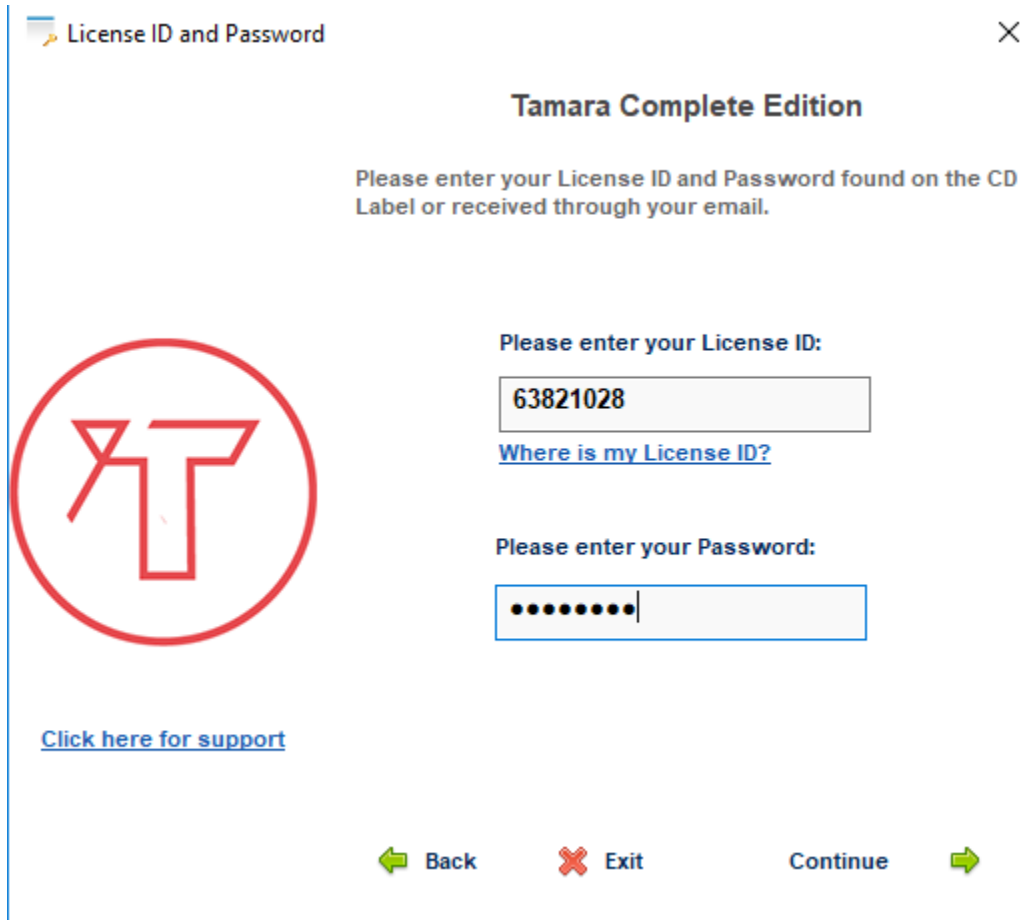
- Choose the "Activate Tamara Complete Edition" option:



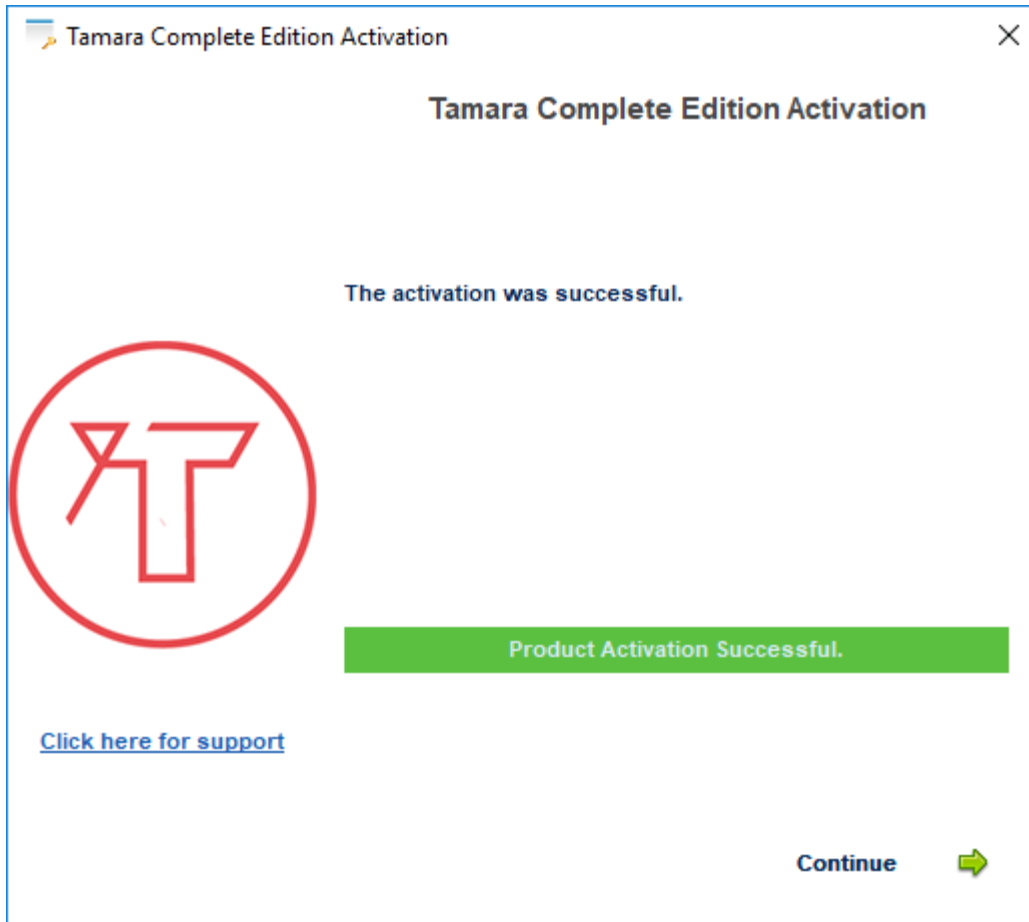
The following window will be displayed:



4. Click Activate Tamara Complete Edition Online, enter License ID and Password in the corresponding fields and click Continue:



5. The following window will be displayed confirming the license activation:

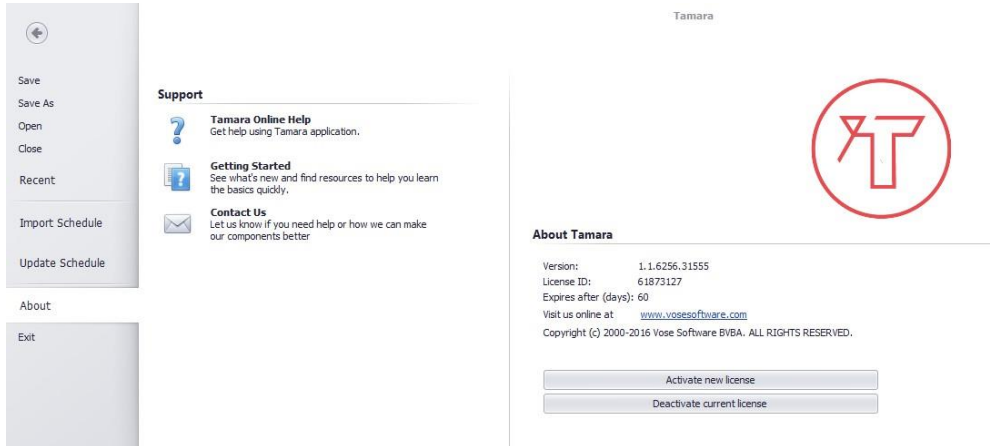


6. Click Continue to close the License window.
7. Tamara will close and you will need to start it again. It will start in the Complete edition mode.
8. If you cannot get online, you will need to contact Vose Software and we will guide you through the Manual Activation option.

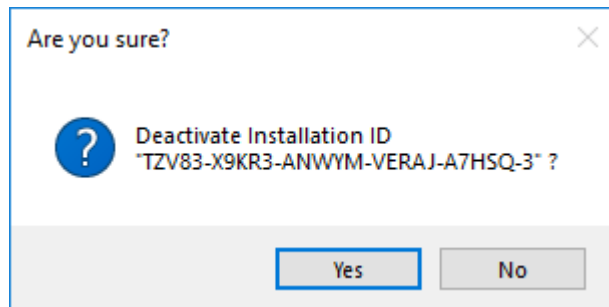
3. License de-activation

Follow the steps below to de-activate a Tamara license:

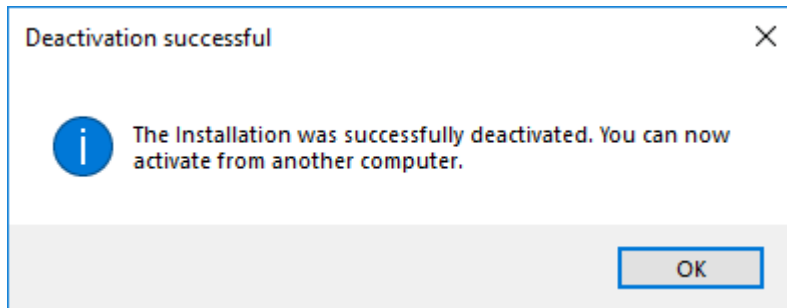
1. Open Tamara software and navigate to File -> About menu:



2. Click "Deactivate current license" button
3. Confirm de-activation:



4. A message confirming de-activation will appear. Click OK to continue:



4. License transfer

You may wish to change your computer and transfer your Tamara license from your old computer to your new one.

License transfer needs to be performed in two parts. First of all, you will need to deactivate the license from your old computer by following the steps described in Section 3 (License de-activation) above. Tamara will not install on your new PC with the same license key unless you have performed this step.

Then you will need to install Tamara on your new PC by following the steps in Section 2 (Activation of the Tamara license).

5. Updating Tamara

Update Tamara by following the steps below:

1. Download and save the installation file on your computer
2. Run the installation file and follow the steps to complete the installation.

For any questions about these instructions, please contact:

Vose Software BVBA

www.vosesoftware.com | support@vosesoftware.com