



vose

Putting numbers around risk

ModelRisk installation guide

Installation, Activation, De-activation, Upgrade

Vose Software

01-May-2019

Contents

1.	Installation	2
2.	Activation of the ModelRisk license	6
3.	License de-activation	7
4.	License transfer.....	9
5.	Updating ModelRisk	9

If you have any difficulty following these procedures please contact us at:

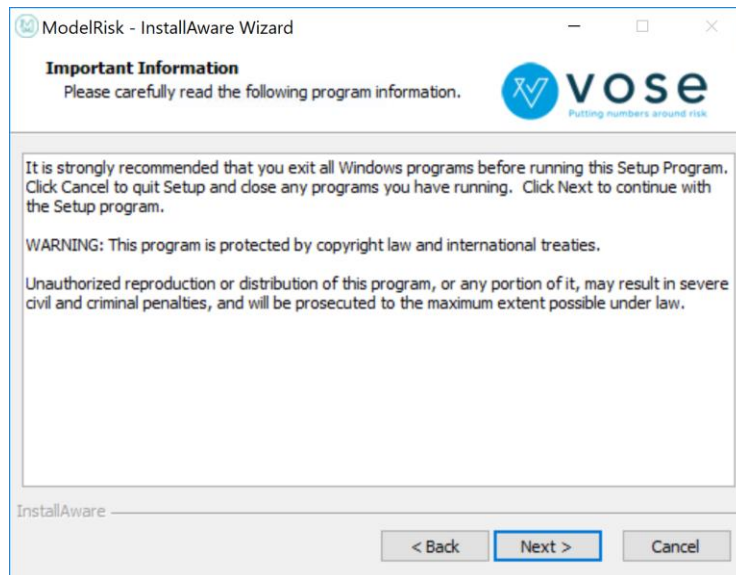
support@vosesoftware.com

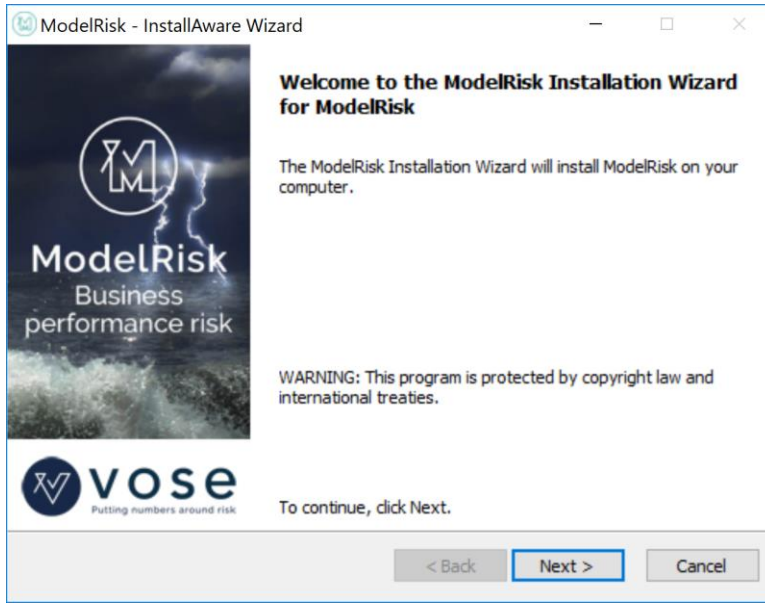
ModelRisk installation guide

1. Installation

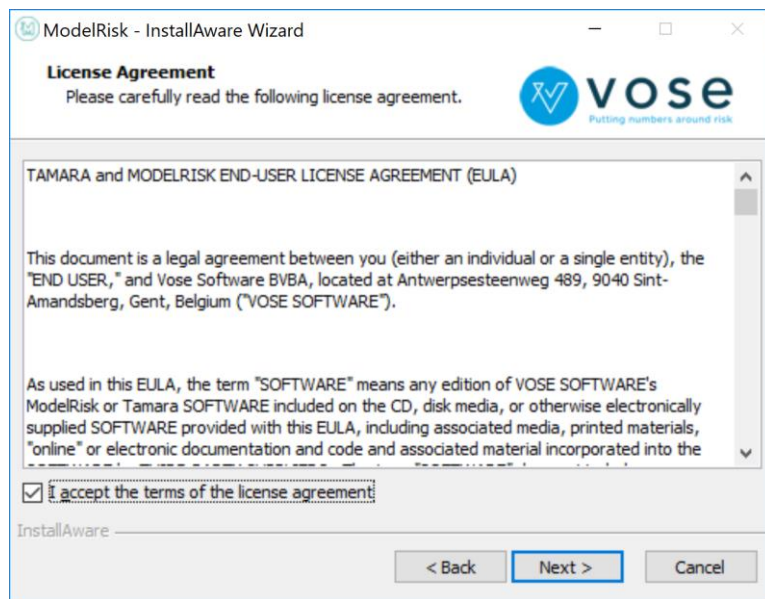
Follow the steps below to install ModelRisk:

1. Go to the Vose Software website www.vosesoftware.com and download the ModelRisk setup file
2. Make sure that **Microsoft Excel is not currently running on your computer and, if possible, that you are connected to the Internet**. Go to the folder where the setup file modelrisksetup.exe is located (usually the 'Downloads' folder) and – VERY IMPORTANT - **right-click** the file. Select "Run as... Administrator" to make sure you're installing the setup file with administrative rights.
3. The setup procedure will begin. Click the Next button on two screens:

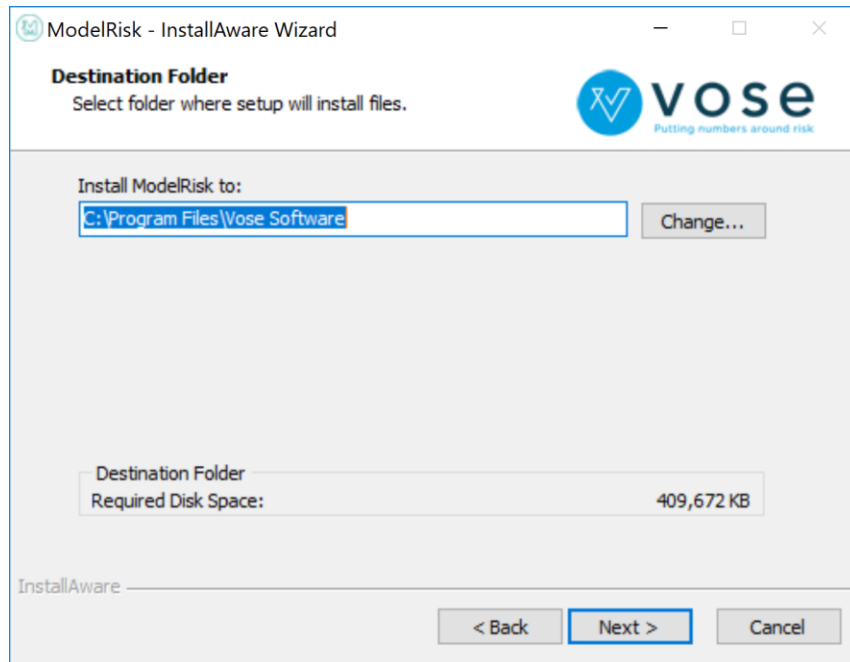




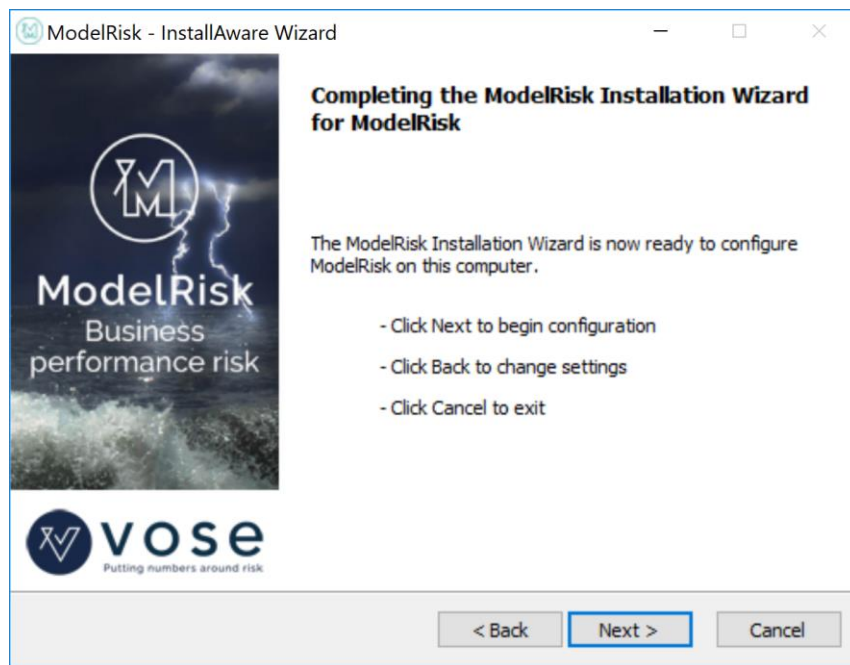
4. Read the license agreement and select "I accept the terms of the license agreement". Click Next:



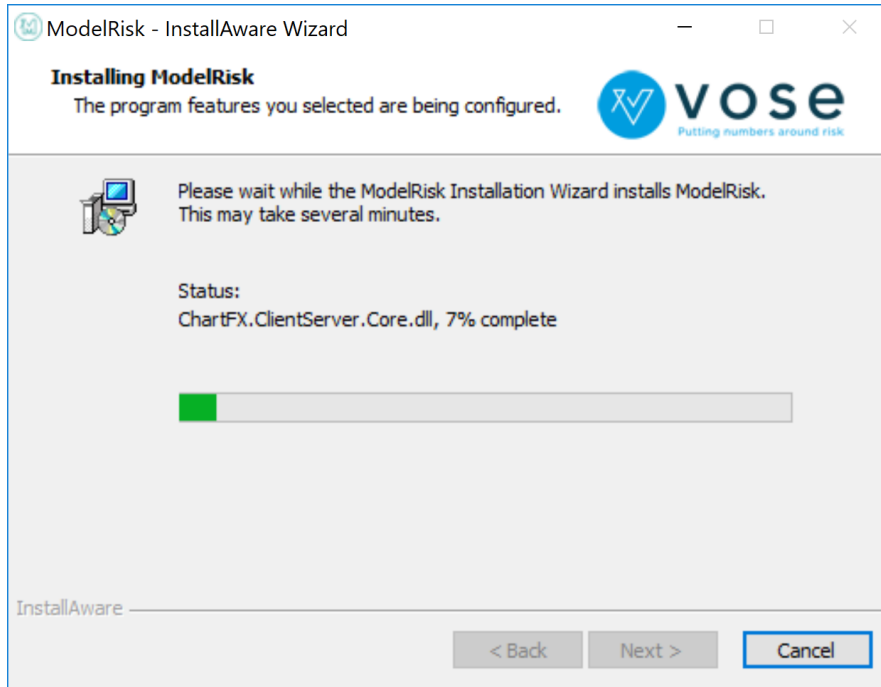
5. Select the installation folder. By default the installation procedure will create the folder C:\Program Files\Vose Software. Click Next:



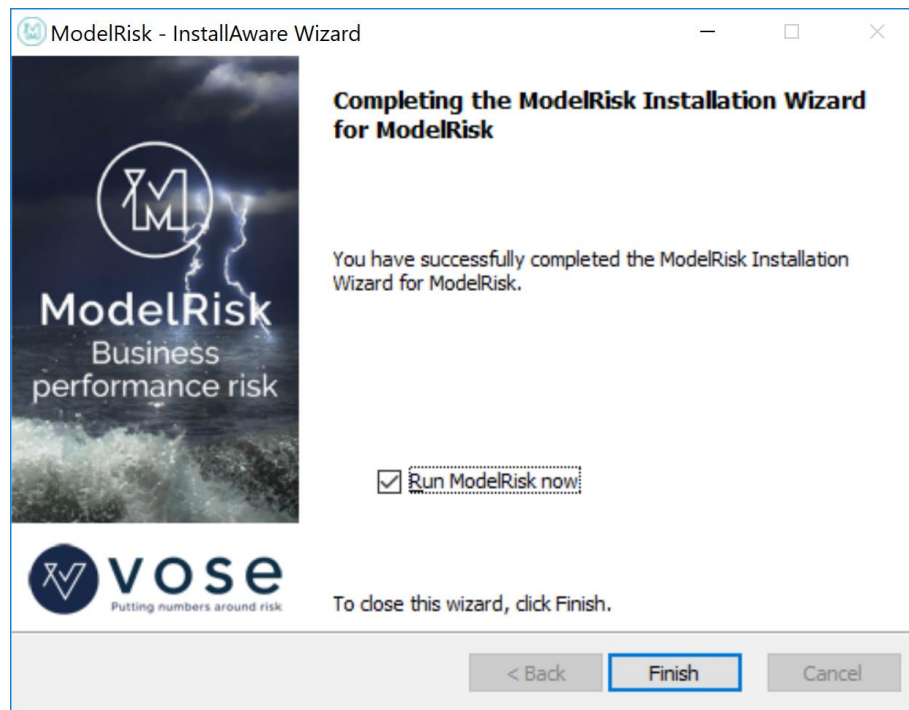
6. Click Next to confirm installation:



7. ModelRisk will start copying the files into the installation folder:



8. Click Finish to exit the installation:



9. ModelRisk will automatically start to run. If you unselected the checkbox during the last step, you can start ModelRisk from the Windows Start Menu (All Programs => Vose Software => ModelRisk => ModelRisk).

10. You can check that ModelRisk is installed by launching ModelRisk (see step above). ModelRisk will have added a ribbon in Microsoft Excel called “ModelRisk”.

2. Activation of the ModelRisk license

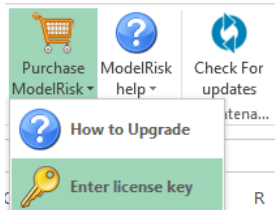
When ModelRisk is launched, it shows the following screen allowing the user to activate the Basic edition:



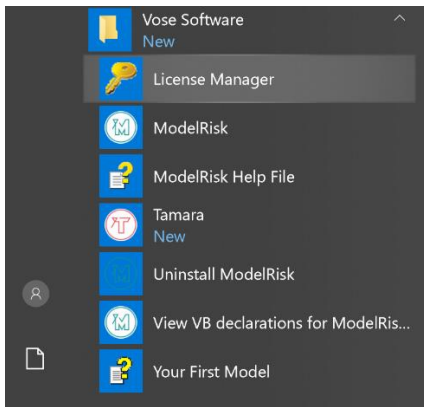
Activating the Basic edition requires the user to copy-paste the code that you received by e-mail after requesting the Basic license into the input field and click the OK button. This will unlock the ModelRisk Basic edition for a period of 1 year.

If you have purchased a license of ModelRisk Complete, you should have received a License Key from Vose Software. The following steps describe how to activate your license of ModelRisk Complete:

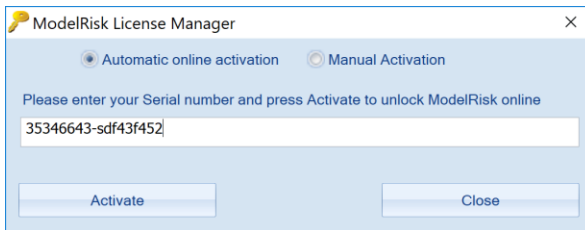
1. Open the ModelRisk License Manager by either clicking the “Enter license key” button in the ModelRisk Ribbon (if the trial has not yet expired):



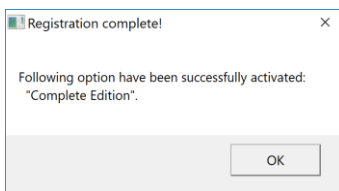
or, choosing the “License Manager” in the ModelRisk Start menu:



2. Connect to the Internet if possible and then enter the ModelRisk serial number into the input field, select ‘Automatic online activation’ (the default setting) and click Activate:



3. If you cannot get online, you will need to contact Vose Software and we will guide you through the Manual Activation option.
4. Successful activation is followed by a confirmation message showing the licenses activated. Click OK to continue:

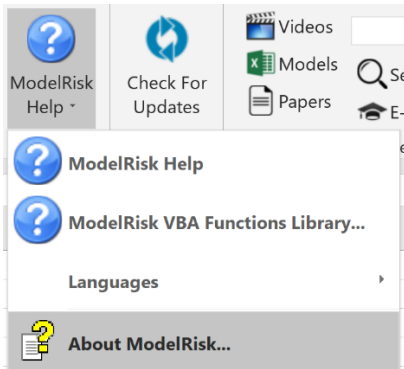


5. Re-start Excel to finish the license activation.

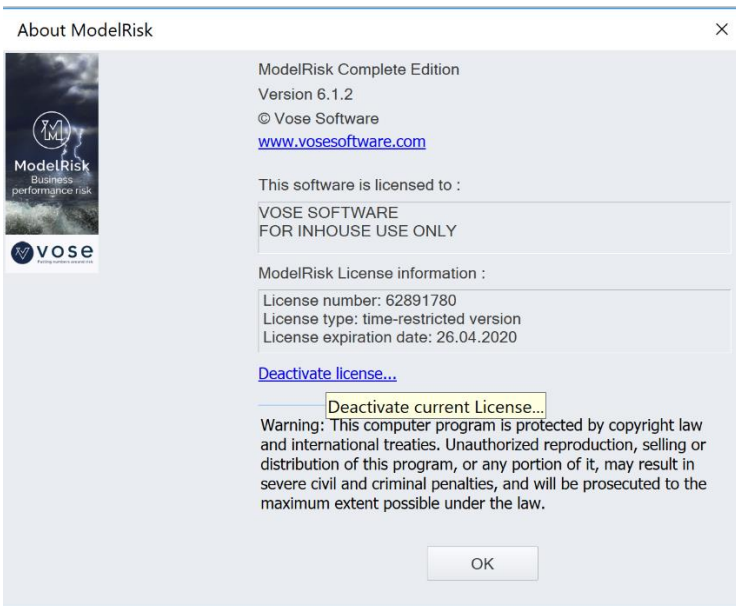
3. License de-activation

Follow the steps below to de-activate a ModelRisk license:

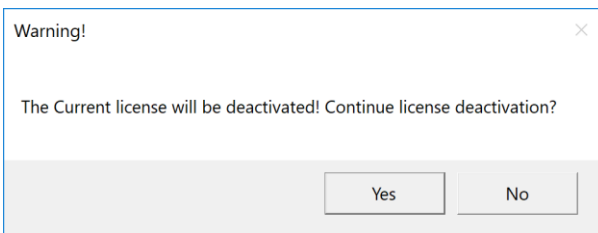
1. Go to ModelRisk Ribbon -> Help -> About ModelRisk:



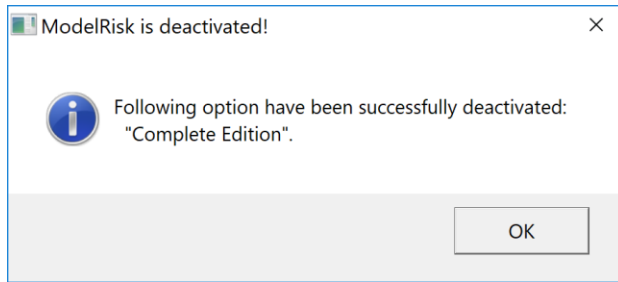
2. Click “Deactivate license...”:



3. Confirm de-activation:



4. A list of de-activated ModelRisk options will appear. Click OK to continue:



5. Re-start Excel to complete license de-activation.

4. License transfer

You may wish to change your computer and transfer your ModelRisk license from your old computer to your new one.

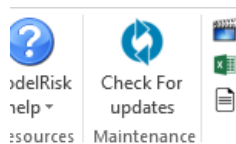
License transfer needs to be performed in two parts. First of all, you will need to deactivate the license from your old computer by following the steps described in Section 3 (License de-activation) above. ModelRisk will not install on your new PC with the same license key unless you have performed this step.

Then you will need to install ModelRisk on your new PC by following the steps in Section 2 (Activation of the ModelRisk license).

5. Updating ModelRisk

Update ModelRisk by following the steps below:

1. Check for the new version by selecting "Check for Update":



2. A Vose Software website page will open, which will show the following message if the update is available:

Good news! There is an update for ModelRisk.

We periodically issue updates to improve performance, add new features and correct any bugs we come across.

We recommend that you take advantage of this FREE update by downloading the latest installation file.

Installation is very simple, but may require administrative rights on your computer. You do not need to uninstall the current version of Tamara.

[Download latest installation file](#)

3. Click the download link and save the installation file on your computer
4. Run the installation file and follow the steps to complete the installation.

For any questions about these instructions, please contact:

Vose Software BVBA

www.vosesoftware.com | support@vosesoftware.com